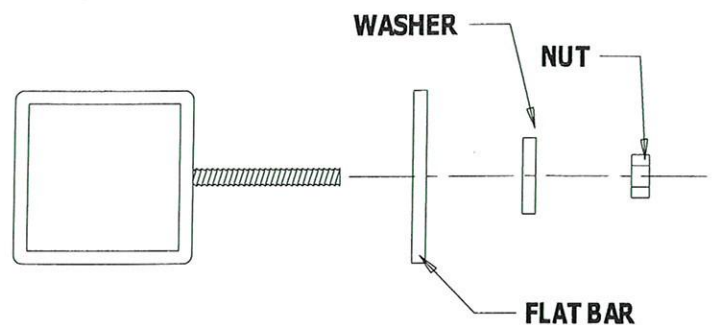


**\*\* IF SYSTEM IS OVER 10' HIGH**

**NOTE: SIZING AND SPACING OF VERTICAL COLUMNS OR POSTS TO BE DETERMINED BY STRUCTURAL ENGINEER.**

**ALTERNATE: WELDED STUDS @ CROSSBEAMS**



**DETAIL: ATTACHMENT OF SOUND CURTAIN TO HORIZONTAL STRUCTURAL STEEL SUPPORTS**