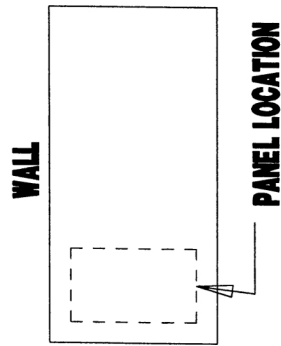
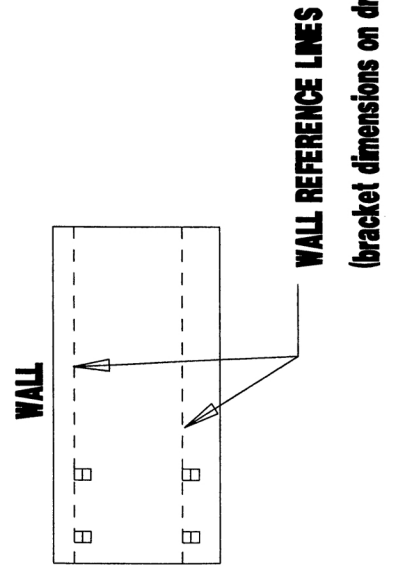


EC-Bracket mounting detail

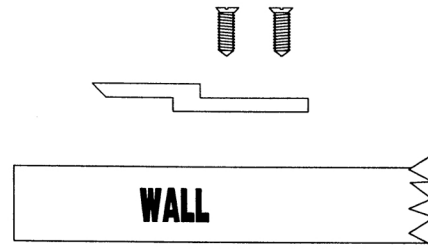
- 1.** Lay out the panel location.



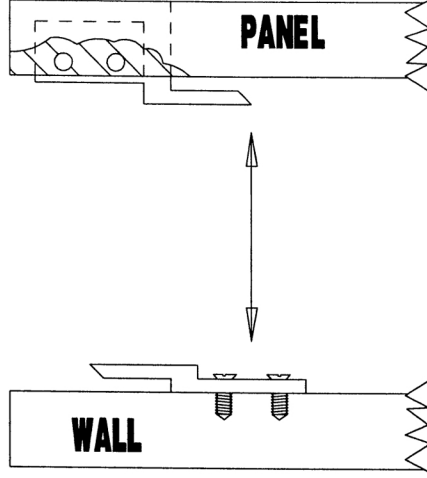
- 2.** Determine EC-1 bracket or EC-2 / EC-4 bar locations on wall to line up with EC-2 / EC-4 bracket locations on panels.



- 3.** Secure the EC-1 hanger or EC-2 / EC-4 bar to the wall with 2 screws.



- 4.** Slide the EC-1 brackets on the panels onto the EC-2 / EC-4 bars on the wall.



* For all ceilings, apply a small amount of adhesive (ie LIQUID NAILS) on both parts of the brackets. Slide brackets together.

EC Bracket mounting detail

