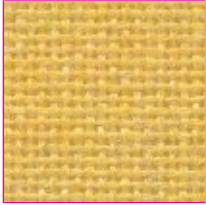


FR701 2100



Yellow
744



Chartreuse
734



Fir
743



Leaf
755



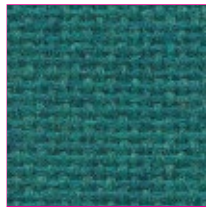
Dune
749



Sunshine
797



Lime
721



Teal
742



Green Neutral
420



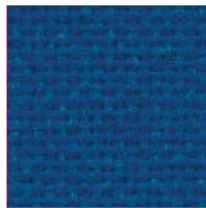
Stream
757



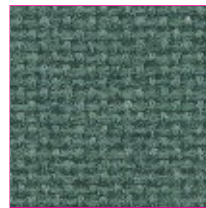
Orange
746



Sky
740



Sapphire
745



Blue Spruce
467



Vert Papier
561



Cardinal
738



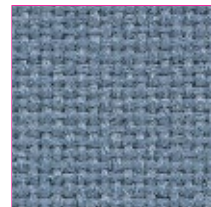
Cobalt
420



Baltic
153



Wedgewood
150



Bayberry
486



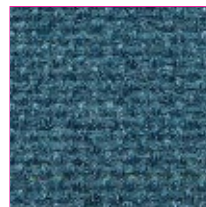
Red
799



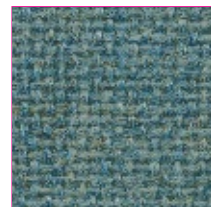
Iris
798



Blue Plum
553



Ultramarine
470



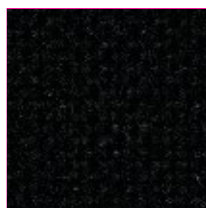
Aquamarine
381



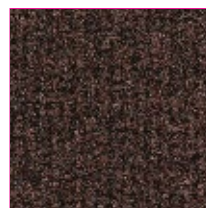
Red
QNU



Deep Burgundy
RRS



Mack
QMU



Choclote
TVP



Medium Grey
OVU



Wheat
130



Bone
748



Buff
460



Eggshell
144



White
224



Eucalyptus
468



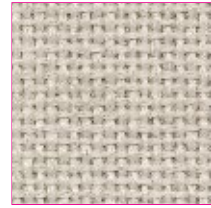
Desert Sand
758



Apricot Neutral
404



Quartz
380



Pearl
481



Blue Papier
539



Coin
794



Cherry Neutral
400



Vanilla Neutral
430



Opal
394



Crystal Blue
175



Blue Neutral
401



Cinnabar
422



Straw
747



Silver Papier
538



Steel Grey
471



Grey Mix
238



Pumice
423



Light Moss
754



Cement Mix
750



Flannel
TVR



Amethyst
QOQ



Moleskin
TVS



Earth
TVO



Silver Natural
QMS

SPECIFICATIONS

Content	100% post-consumer recycled polyester
Weight	16.0 ± 0.5 oz./lin. yd.
Width	66" min. useable
Repeat	none

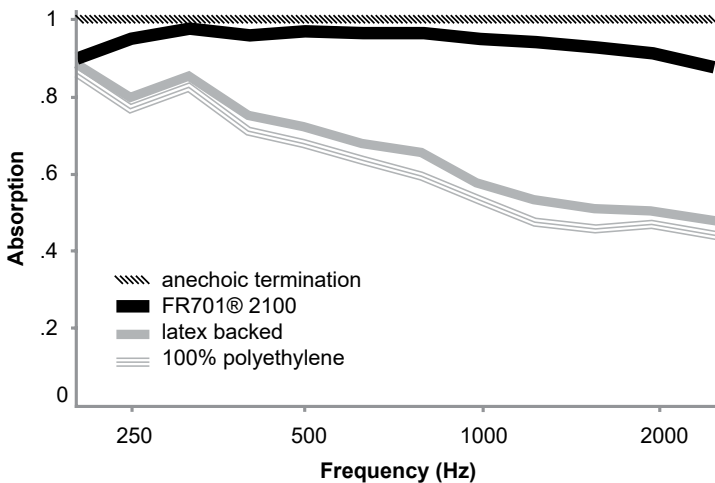
CLEANING CODE

Standard Care Label W-S. Clean with water based cleaning agents, foam or pure, water free solvents. Vacuuming or light brushing is recommended to prevent dust and soil buildup.

ACOUSTICAL PERFORMANCE

The plot below summarizes impedance tube measurements of absorption of an anechoic termination and various fabrics in front of the anechoic termination.

Acoustical Performance for Panel Applications (ISO 10534-2)



NRC of anechoic termination **1.00**
NRC of fabric in front of anechoic termination **.95**

PERFORMANCE

- Colorfastness to Light (AATCC 16.3 Option 3)
Grade 4 min. at 40 hours
- Colorfastness to Crocking (AATCC 8)
Grade 4 min. dry & Grade 3 min. wet
- Breaking Strength (ASTM D5034)
150 lbf min. warp and fill
- Flammability (ASTM E84)
Class I or A

SUSTAINABILITY

- 100% recycled and recyclable
Terratex is a registered trademark of Duvaltex
- facts[™]
Silver

MISCELLANEOUS

Proudly woven in North America supporting our local communities.

Application testing of this product is recommended. Colors may vary between dye lots. This is a non-directional fabric.

VISIT GUILFORDOFMAINE.COM FOR SAMPLES.

This pattern is included in the underwriters laboratory panel fabric recognition program. Additional testing of this U.L. recognized component fabric is not required on approved panels from participating manufacturers.

*Certification Marks owned by the Association for Contract Textiles, Inc.

