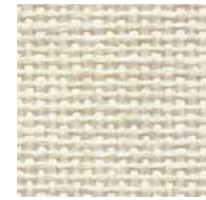
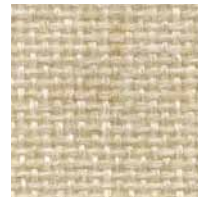


# FR701® 2100

Panel  
Acoustic



**Eggshell**  
144



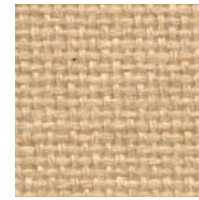
**Wheat**  
130



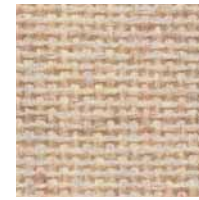
**Bone**  
748



**Buff**  
460



**Straw**  
747



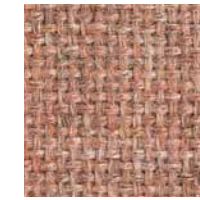
**Vanilla Neutral**  
403



**Terra**  
751



**Cherry Neutral**  
400



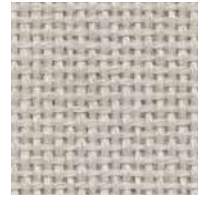
**Cinnabar**  
422



**Rose Quartz**  
390



**Quartz**  
380



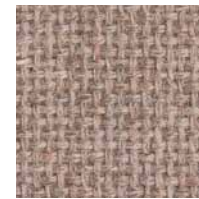
**Pearl**  
481



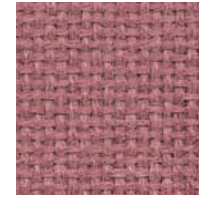
**Desert Sand**  
758



**Apricot Neutral**  
404



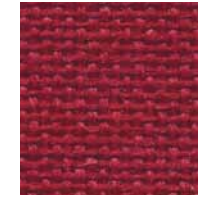
**Pumice**  
423



**Bronze**  
545



**Sienna**  
475



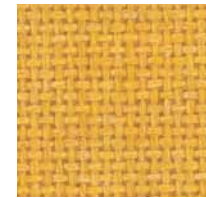
**Red**  
799



**Claret Accent**  
418



**Deep Burgundy**  
556



**Sunshine**  
797



**Light Moss**  
754



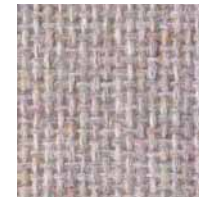
**Earth**  
792



**Moleskin**  
796



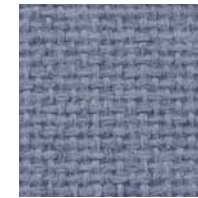
**Chocolate**  
793



**Lavender Neutral**  
405



**Lilac**  
752



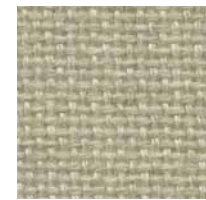
**Violet**  
753



**Amethyst**  
424



**Iris**  
798



**Dune**  
749



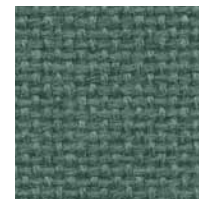
**Leaf**  
755



**Stream**  
757



**Aquamarine**  
381



**Blue Spruce**  
467



**Eucalyptus**  
468



**Green Neutral**  
402



**Lake**  
756



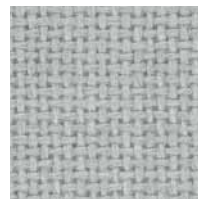
**Chrome Green**  
549



**Ultramarine**  
470



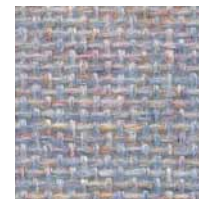
**Verte Papier**  
561



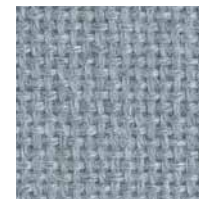
**Coin**  
794



**Blue Papier**  
539



**Blue Neutral**  
401



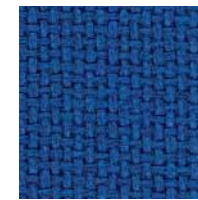
**Crystal Blue**  
175



**Bayberry**  
486



**Wedgewood**  
150



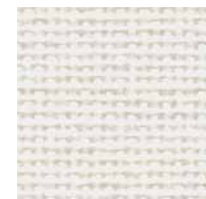
**Cobalt**  
420



**Baltic**  
153



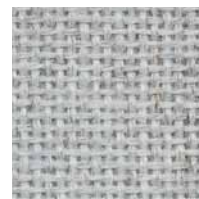
**Blue Plum**  
553



**White**  
224



**Opal**  
394



**Silver Papier**  
538



**Silver Neutral**  
406



**Cement Mix**  
750



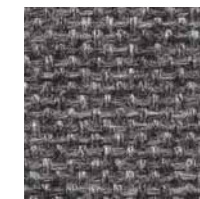
**Steel Grey**  
471



**Grey Mix**  
238



**Flannel**  
795



**Medium Grey**  
298



**Black**  
408

# FR701® 2100

Panel  
Acoustic

## Specifications

### Content

100% post-consumer recycled polyester

### Weight

16.0 ± 0.5 oz./lin. yd.

### Width

66" min. useable


### Repeat


none


## Cleaning Code


Standard Care Label W-S. Clean with water based cleaning agents, foam or pure, water free solvents. Vacuuming or light brushing is recommended to prevent dust and soil buildup.

## Performance

 **Colorfastness to Light (AATCC 16 Option 3)**  
Grade 4 min. at 40 hours

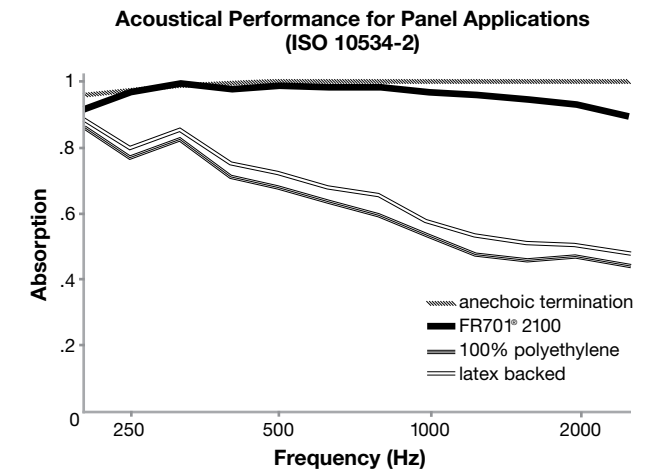
 **Colorfastness to Crocking (AATCC 8)**  
Grade 4 min. dry & Grade 3 min. wet

 **Breaking Strength (ASTM D5034)**  
150 lbf min. warp and fill

 **Flammability (ASTM E84)**  
Class I or A

## Acoustical Performance

The plot below summarizes impedance tube measurements of absorption of an anechoic termination and various fabrics in front of the anechoic termination.



**NRC of anechoic termination**  
1.00

**NRC of fabric in front of anechoic termination**  
.95

## Miscellaneous

Every effort has been made to ensure color accuracy of the digital images, however, please order a sample before specification. Application testing of this product is recommended. Colors may vary between dye lots. This is a non-directional fabric.

Proudly woven in the USA supporting our local communities.

Visit [guilfordofmaine.com](http://guilfordofmaine.com) for samples.



Terratex is a registered trademark of True Textiles, Inc. and designates fabrics that are made from 100% recycled or compostable material using increasingly sustainable manufacturing practices to produce a high quality product that is recyclable at the end of its useful life.



CO<sub>2</sub> emissions from 100% of the electricity used by the manufacturer to produce this product have been measured and offset in accordance with The CarbonNeutral Protocol.



This pattern is included in the underwriters laboratory panel fabric recognition program. Additional testing of this U.L. recognized component fabric is not required on approved panels from participating manufacturers.

\*ACT\* registered certification marks.

## Guilford of Maine

[guilfordofmaine.com](http://guilfordofmaine.com)

800 544 0200 Customer Care  
616 554 2255 Fax

08/14